

BUILDING HAPPINESS

IN DESIGN-BUILD

CONTACT US: **604-541-2604**

info@colonyconstruction.com

www.colonyconstruction.com

OUR PURPOSE: “BUILDING HAPPINESS!”

Colony is a team of people who have a love for construction with a primary focus on general contracting and steel building installations. In 35+ years in business, we have constructed over 550 buildings on 4 continents.

Our entire reason for existing is to create more happiness in the lives of our clients, our employees and the people around us. This theme carries into everything we do and every decision we make.

CORE VALUES:

Go Home Healthy.

No matter what the cost, everyone we work with will go home healthy to their families every day.

Progressive Personalities.

When it comes to being progressive, our people are open-minded, forward-thinking, and willing to adapt. In today's construction landscape, if you're not progressing forward, you're moving backward.

Cooperation Over Confrontation.

Cooperation is about inviting everyone to be part of one like-minded team with the same goals. We believe that nurturing long term relationships will always be more prosperous than fighting over the petty stuff.

Accountability.

Count on us to come up with a plan and then follow through with precision. When it comes to doing what we say we'll do, we're your "Accountibili-Buddies"!

Doing the Right Thing.

It's easy to pretend to be ethical, but what really counts is what you do when it hits you in the pocket book. Colony believes in doing the right thing, every time, no matter what it costs us.



CONTACT US: **604-541-2604**
info@colonyconstruction.com

DESIGN-BUILD

Starting fresh? Whether you need a stylish new commercial office building, a manufacturing facility with architectural flair or an industrial project with heavy steel, we implore you to put our Design-Build team to the test. With an extensive background in construction, we are able to design you the perfect building that will maximize all your functional requirements while staying within your budget.

STEP 1: BRAINSTORMING

Do you have a great idea for your new building, but all you have is a few rough ideas or a napkin sketch? We will work with you on a preliminary design and offer guidance when it comes to architectural, civil, landscaping, interior finishing, mechanical and electrical designs.

STEP 2: BUILDING A BUDGET

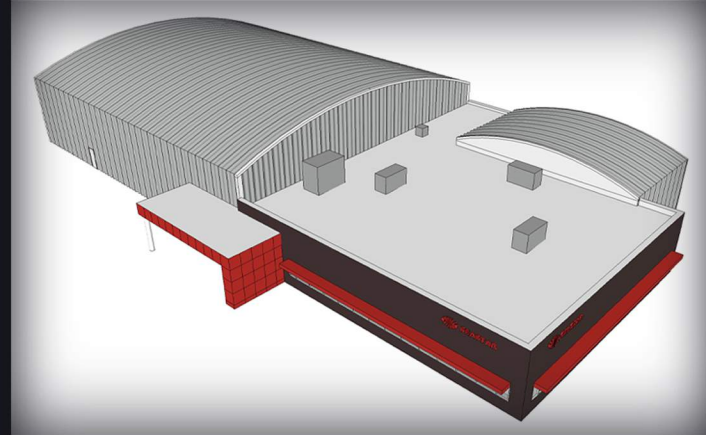
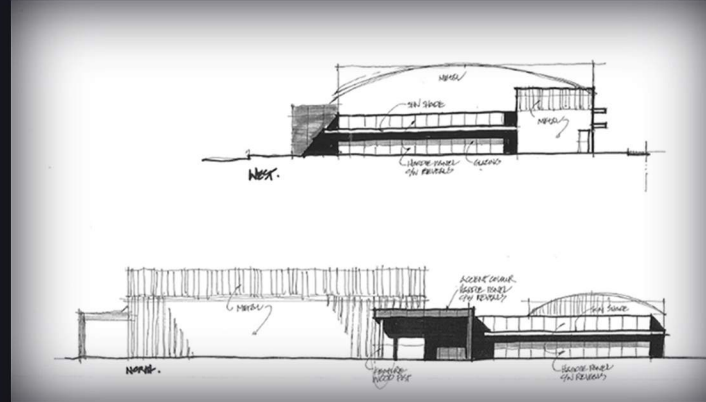
Once all the options are selected and the preliminary designs are done, we put together a Guaranteed Maximum Price and a schedule for you for Detailed Design, Permitting and Construction.

STEP 3: DESIGN

We engage with all consultants to finalize the details of all design scopes and coordinate them together into one clean and organized package. We then manage the application process for Development Permits and Building Permits with your local authority quickly and efficiently.

STEP 3: CONSTRUCTION

This is the fun part. We hire and manage all trades from start to finish. We invest a ridiculous amount of time in pre-planning and subtrade screening before we are on site and once there, we maintain the highest standards for quality, safety and schedule.



SUPPLY CHAIN

www.colonyconstruction.com

BUILDING HAPPINESS WITH COLONY

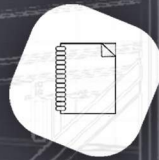
Through 30+ years in business, we've come to learn which suppliers & subcontractors have the "good goods" and which ones don't. Through our comprehensive evaluation process, we rate and track supplier & subcontractor performance on an ongoing basis to ensure the suppliers we chose for your project will:



SUPPLY QUALITY MATERIAL



DELIVER ON-TIME



HONOUR THEIR WARRANTIES



ENSURE THE SAFETY OF THEIR PRODUCTS AND WORKERS



PROVIDE VALUE ADDED SERVICE THROUGHOUT THE LIFE OF THEIR PRODUCTS

CONTACT US: 604-541-2604

OUR PROJECTS



Devon Energy
Maintenance Building



Red Chris Development Co Ltd.
Con Shed



Alkan Air
Aircraft Hangar

"Colony has been very good at supplying the necessary detail. We are doing this project on a cost plus contract and it requires a high level of trust with all involved as to not have surprises as the project moves along. I also believe they have given me the confidence that they have a real concern for providing a finished product on time and at the lowest possible cost."

THE REDCO GROUP
Redwood Plastics and Rubber
Graeme Fraser
Owner/President

"The building your company supplied and erected was delivered on time; which we considered a feat in itself. Erected on schedule and on budget, we were presented with no extras and no surprises."

THE RICHMOND HOUSE OF COMPANIES
E.B. Tait
Vice President, Operations



The Redco Group /Redwood Plastics and Rubber
Administrative Building



Intrawest Resort Holdings Inc Whistler Peak 2 Peak Gondola



"I think some of the real advantages were working with Colony on the design and budgeting process. If we say "Well what if we do this? What's this going to cost us?" Or if we are looking at potential cost savings, the response time from Colony was very quick and allowed us to make decisions quickly, which was a real advantage. I guess the real value was that Colony was able to deliver the building that everybody wanted within our budget and the added bonus was the ability to work with us to fine tune the design and improve the building."

INTRAWEST PLACEMAKING
John R. Morley
P. Eng, Vice President of Development

"I really like Colony's approach to respecting the original design concept. We had the design well developed before Colony came on board and we had to make a few compromises to stay within budget, but it wasn't a dumbing down of the project, it was a streamlining of the design...a very good collaboration. What I enjoyed is the fact that this wasn't seen as just another job but there was an enthusiasm about doing something a little bit different and that really helped the process."

CANNON DESIGN
Christopher Rowe MAIBC MRAIC LEED® AP
Vice President

OUR PURPOSE: "BUILDING HAPPINESS!"

Turn-Key Construction, New Westminster, BC JIBC Classroom Addition & Rope Rescue Tower • Burnaby Dieseltech Services Ltd., Burnaby, BC Maintenance Facility • Anglo American - Nemi Mine, Tumbler Ridge, BC Truck Shop & Warehouse • Coalspur & DRA Global - Vista Coal Mine, Hinton, AB Office Building • Goldcorp & Hatch - Red Lake Mine, Red Lake, ON Process & Mercury Abatement Buildings • Vale & Fluor Canada - Long Harbour Processing Plant & Water Treatment Plant Buildings • Teck Resources - Quintette Mine, Tumbler Ridge, BC Shop & Warehouse Buildings • Centerra Gold - Kemess Mine, Peace River, BC Primary Crusher, Substation & Pumphouse Buildings • Pelly Construction - Golden Bear Mine, Dease Lake, BC Maintenance Shop & Process Buildings • North American Palladium - Lac Des Iles Mine, Thunder Bay, ON Process & Truck Shop Buildings • Centerra Gold & Associated Engineering - Mount Milligan, Prince George, BC Permanent Work Camp • Kinross Gold - La Coipa Mine, Atacama, Chile Process Buildings & Transfer Station • Imperial Metals - Mount Polley Concentrator Building • Stewart Bulk Terminals, Stewart, BC Concentrate Storage Facility • Skeena Resources - Eskay Creek, Stewart, BC Crusher, Grinder & Mill Building Expansions • Cheni Gold Mine - Toodoggone Mine, Smithers, BC Assay Lab & Crusher Building • Glencore Xstrata - Brenda Mine, Peachland, BC Water Treatment Plant • Westshore Terminals, Delta, BC Dumper Building • Westmin Resources - Premier Gold Project, Stewart, BC Conveyor Houses, Concentrator & Electrical Buildings • Kinross Gold - La Coipa Mine, Atacama, Chile Process Buildings & Transfer Station • Imperial Metals - Mount Polley Concentrator Building • Stewart Bulk Terminals, Stewart, BC Concentrate Storage Facility • Skeena Resources - Eskay Creek, Stewart, BC Crusher, Grinder & Mill Building Expansions • Cheni Gold Mine - Toodoggone Mine, Smithers, BC Assay Lab & Crusher Building • Glencore Xstrata - Brenda Mine, Peachland, BC Water Treatment Plant • Westshore Terminals, Delta, BC Dumper Building • Westmin Resources - Premier Gold Project, Stewart, BC Conveyor Houses, Concentrator & Electrical Buildings • Canfor Peace Valley OSB Plant Buildings • Canfor Houston Planermill and Pelletizer Buildings • Weyerhaeuser Princeton Sawmill and Planermill Buildings • Ainsworth (Norbord) Grand Prarie All OSB Plant Buildings • Kiewit Management Co. Fort MacMurray, AB - Kearl Lake HVAC • Blaine Larson Farms, Hamer, Idaho Potato Storage • Babcock Canada Submarine Hangar • Fluor Canada Vale Inco Raw Water Treatment • Tolko Industries, Williams Lake, BC Roof Install

• Pinnacle Pellet Burns Lake Pelletizer and Hammermill Buildings • Fluor Canada Vale Inco Raw Water Treatment

COMPLETED PROJECTS:

• Thompson River Veneer Warehouses and Expansion

• Canpar Particle Board Grand Forks All Plant Buildings • Coastland Wood Debarker and Veneer Plant Buildings • Canfor Peace Valley OSB Plant Buildings • Canfor Houston Planermill and Pelletizer Buildings • Weyerhaeuser Princeton Sawmill and Planermill Buildings • Ainsworth (Norbord) Grand Prarie All OSB Plant Buildings • Pinnacle Pellet Burns Lake Pelletizer and Hammermill Buildings • Pinnacle Pellet Smithers Pelletizer and Hammermill Buildings • Thompson River Veneer Veneer Warehouses and Expansion • Canpar Particle Board Grand Forks All Plant Buildings • Coastland Wood Debarker and Veneer Plant Buildings • West Fraser High Prairie Merchandiser Building • West Fraser Hinton Debarker Building • West Fraser Blue Ridge Panermill and Staker/ Sorter Buildings • West Fraser Slave Lake Plywood Warehouse • West Fraser Quesnel Boiler House and Auxiliary Buildings • Storage Vault Canada, Mission, BC Access Storage • West Fraser William's Lake Stacker Building • Tolko Meadow Lake OSB All OSB Plant Buildings • Tolko William's Lake Post-Fire Sawmill Rebuild • Savona Specialty Plywood Veneer Line Building • Crown Lumber "B", "C" and Warehouse Buildings • Finlay Forest Mackenzie Sawmill Buildings • Fletcher Challenge Mackenzie Pulp Roll Paper Distribution Center • Fraser River Fibreboard RMS, Energy and MDF Office Buildings • HMS Lumber Warehouse Building • L&M Lumber Sawmill Addition • Nexterra Energy Gasification Energy Building • TNorthwood Lumber Sawmill and Debarker Addition • Durwest - Seastar Chemical Head Office and Manufacturing Buildings • Venture Pacific Construction Management ,Whitehorse, YT Viking Air Manufacturing and Maintenance Facility • Jacob Bros, Maple Ridge, BC - Kanaka Business Park Burnaby Saw Service Office and Warehouse Facility • Nor Architects, Whistler, BC Olympic Plaza Pavilion • Intrawest Resort Holdings Inc. Whistler, BC Peak 2 Peak Gondola • Cascade Aerospace, Abbotsford, BC Maintenance Hanger • Kiewit Management Co. Fort MacMurray, AB - Kearl Lake River Water Intake • CRT Construction, North of Pemberton, BC - Boulder Creek Hydro Powerhouse • Canadian Farms, Surrey, BC Packing Plant • Alberni Athletic Association, Port Alberni, BC Alberni Athletic Hall • Fluor Canada Vale Inco Raw Water Treatment • Vanbots Construction , White Rock, BC , Centre for Active Living - Design of Curling Arena • West Fraser MDF Merch Building • Premium Truck , Terrace, BC Replacement Components • Big

Surrev, BC Of White Rock, BC Water Treatment Plant Addition • Pacific ir. Nanaimo, BC Aviat

